

Art. BS20120 • BS20132 • BS20145 • BS20150 • BS20151 • BS20152 • BS20351 • BS20353 • BS20453
Interruttore 2P 250V- 20/32/45A

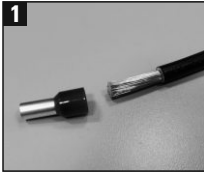
- Per una corretta installazione:
- utilizzare scatole con profondità minima di 35 mm per conduttori fino a 6 mm²
 - utilizzare scatole con profondità minima di 48 mm per conduttori da 10 a 16 mm²
 - predisporre le coppie di conduttori con ingressi nella scatola da direzioni diverse.



INDICAZIONI DI CABLAGGIO



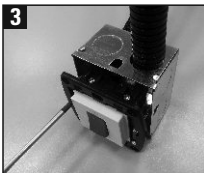
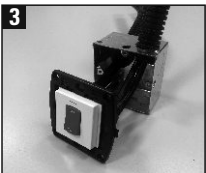
1 Utilizzare capicorda sui conduttori (6-16 mm²).



2 Infilare i capicorda e serrare i morsetti con cacciavite a croce PH 2, max 2,5 Nm.

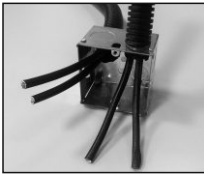


3 Fissare il comando alla scatola con cacciavite a taglio o a croce PH 1 senza che i conduttori si pieghino su se stessi.



Art. BS20120 • BS20132 • BS20145 • BS20150 • BS20151 • BS20152 • BS20351 • BS20353 • BS20453
Interruttore 2P 250V- 20/32/45A

- Per una corretta installazione:
- utilizzare scatole con profondità minima di 35 mm per conduttori fino a 6 mm²
 - utilizzare scatole con profondità minima di 48 mm per conduttori da 10 a 16 mm²
 - predisporre le coppie di conduttori con ingressi nella scatola da direzioni diverse.



INDICAZIONI DI CABLAGGIO



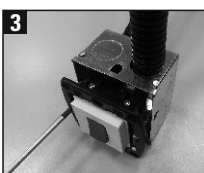
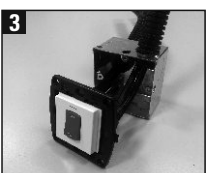
1 Utilizzare capicorda sui conduttori (6-16 mm²).



2 Infilare i capicorda e serrare i morsetti con cacciavite a croce PH 2, max 2,5 Nm.

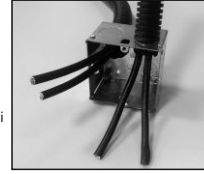


3 Fissare il comando alla scatola con cacciavite a taglio o a croce PH 1 senza che i conduttori si pieghino su se stessi.

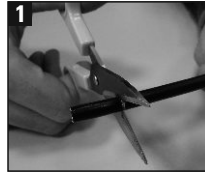


Art. BS20120 • BS20132 • BS20145 • BS20150 • BS20151 • BS20152 • BS20351 • BS20353 • BS20453
Interruttore 2P 250V- 20/32/45A

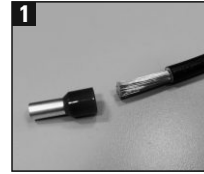
- Per una corretta installazione:
- utilizzare scatole con profondità minima di 35 mm per conduttori fino a 6 mm²
 - utilizzare scatole con profondità minima di 48 mm per conduttori da 10 a 16 mm²
 - predisporre le coppie di conduttori con ingressi nella scatola da direzioni diverse.



INDICAZIONI DI CABLAGGIO



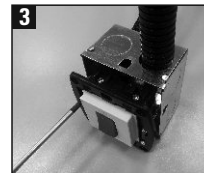
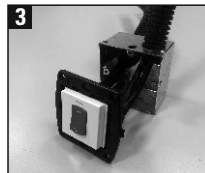
1 Utilizzare capicorda sui conduttori (6-16 mm²).



2 Infilare i capicorda e serrare i morsetti con cacciavite a croce PH 2, max 2,5 Nm.

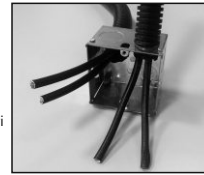


3 Fissare il comando alla scatola con cacciavite a taglio o a croce PH 1 senza che i conduttori si pieghino su se stessi.

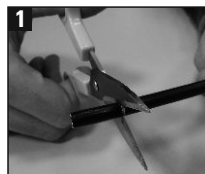


Art. BS20120 • BS20132 • BS20145 • BS20150 • BS20151 • BS20152 • BS20351 • BS20353 • BS20453
Interruttore 2P 250V- 20/32/45A

- Per una corretta installazione:
- utilizzare scatole con profondità minima di 35 mm per conduttori fino a 6 mm²
 - utilizzare scatole con profondità minima di 48 mm per conduttori da 10 a 16 mm²
 - predisporre le coppie di conduttori con ingressi nella scatola da direzioni diverse.



INDICAZIONI DI CABLAGGIO



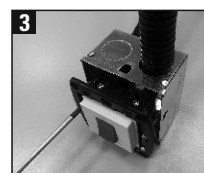
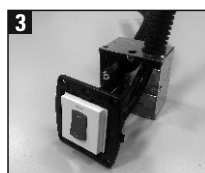
1 Utilizzare capicorda sui conduttori (6-16 mm²).



2 Infilare i capicorda e serrare i morsetti con cacciavite a croce PH 2, max 2,5 Nm.



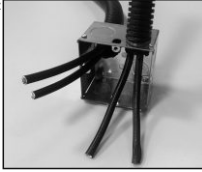
3 Fissare il comando alla scatola con cacciavite a taglio o a croce PH 1 senza che i conduttori si pieghino su se stessi.



Item: **BS20120 • BS20132 • BS20145 • BS20150 • BS20151 • BS20152 • BS20351 • BS20353 • BS20453**
20/32/45A 2P switch 250V~

Instructions for a correct installation:

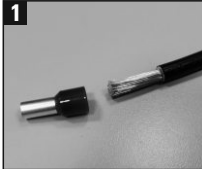
- Use wall boxes with a minimum depth of **35 mm** for cables up to 6 mm²
- Use wall boxes with a minimum depth of **48 mm** for cables from 10 mm² to 16 mm²
- Insert cable couplers into the wall boxes holes from different directions.



WIRING INDICATIONS



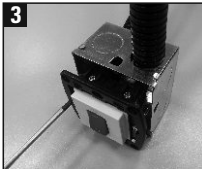
- 1** Use cable terminals on the cables (6–16 mm²).



- 2** Fix the cable terminals and close the terminals with a cross-tip screwdriver (PH 2, max 2,5 Nm).



- 3** Fix the switch to the wall box using a flat-tip or a PH 1 cross-tip screwdriver. Cables shall not fold on each other.



31SL MANUALE34
Rev. 2015-07-08

Item: **BS20120 • BS20132 • BS20145 • BS20150 • BS20151 • BS20152 • BS20351 • BS20353 • BS20453**
20/32/45A 2P switch 250V~

Instructions for a correct installation:

- Use wall boxes with a minimum depth of **35 mm** for cables up to 6 mm²
- Use wall boxes with a minimum depth of **48 mm** for cables from 10 mm² to 16 mm²
- Insert cable couplers into the wall boxes holes from different directions.



WIRING INDICATIONS



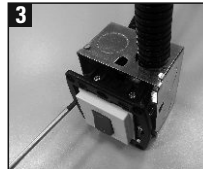
- 1** Use cable terminals on the cables (6–16 mm²).



- 2** Fix the cable terminals and close the terminals with a cross-tip screwdriver (PH 2, max 2,5 Nm).



- 3** Fix the switch to the wall box using a flat-tip or a PH 1 cross-tip screwdriver. Cables shall not fold on each other.

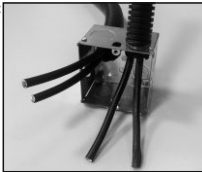


31SL MANUALE34
Rev. 2015-07-08

Item: **BS20120 • BS20132 • BS20145 • BS20150 • BS20151 • BS20152 • BS20351 • BS20353 • BS20453**
20/32/45A 2P switch 250V~

Instructions for a correct installation:

- Use wall boxes with a minimum depth of **35 mm** for cables up to 6 mm²
- Use wall boxes with a minimum depth of **48 mm** for cables from 10 mm² to 16 mm²
- Insert cable couplers into the wall boxes holes from different directions.



WIRING INDICATIONS



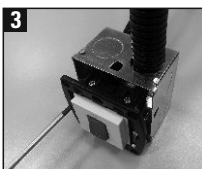
- 1** Use cable terminals on the cables (6–16 mm²).



- 2** Fix the cable terminals and close the terminals with a cross-tip screwdriver (PH 2, max 2,5 Nm).



- 3** Fix the switch to the wall box using a flat-tip or a PH 1 cross-tip screwdriver. Cables shall not fold on each other.

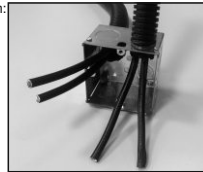


31SL MANUALE34
Rev. 2015-07-08

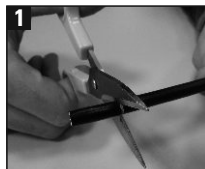
Item: **BS20120 • BS20132 • BS20145 • BS20150 • BS20151 • BS20152 • BS20351 • BS20353 • BS20453**
20/32/45A 2P switch 250V~

Instructions for a correct installation:

- Use wall boxes with a minimum depth of **35 mm** for cables up to 6 mm²
- Use wall boxes with a minimum depth of **48 mm** for cables from 10 mm² to 16 mm²
- Insert cable couplers into the wall boxes holes from different directions.



WIRING INDICATIONS



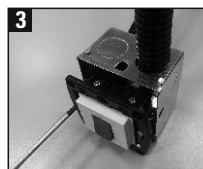
- 1** Use cable terminals on the cables (6–16 mm²).



- 2** Fix the cable terminals and close the terminals with a cross-tip screwdriver (PH 2, max 2,5 Nm).



- 3** Fix the switch to the wall box using a flat-tip or a PH 1 cross-tip screwdriver. Cables shall not fold on each other.



31SL MANUALE34
Rev. 2015-07-08