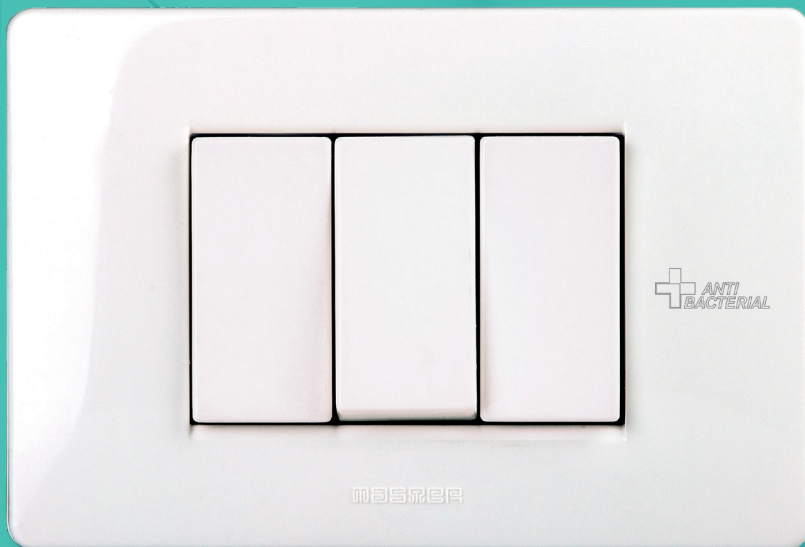


MIX+ ANTI BACTERIAL

more peaceful than ever



MASTER
LIVING TECHNOLOGY

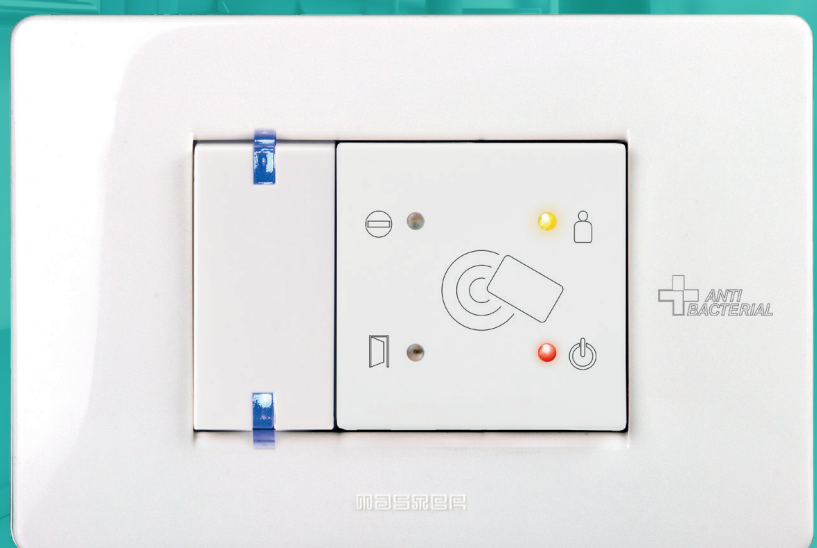


MIX ANTI-BACTERIAL is the new Master's modular system designed for buildings where hygiene is essential, such as hospitals, nursing homes, clinics, schools and childcare facilities. Plates and contact surfaces of the MIX ANTI-BACTERIAL system are made with a special material capable of eliminating more than 95% of the microbial load. A simple but important choice to have greater peace of mind from your electrical system.



Thanks to the integration with the UNA AUTOMATION system, the MIX ANTI-BACTERIAL modular system allows you to use all the automation and control functions of an advanced building automation system even in hospitals or in places intended for children.

The access control created with DIFRA2 devices allows you to specify differentiated restricted access areas for each category of personnel, all to have a maximum level of protection.



2 Intensive therapy
CH

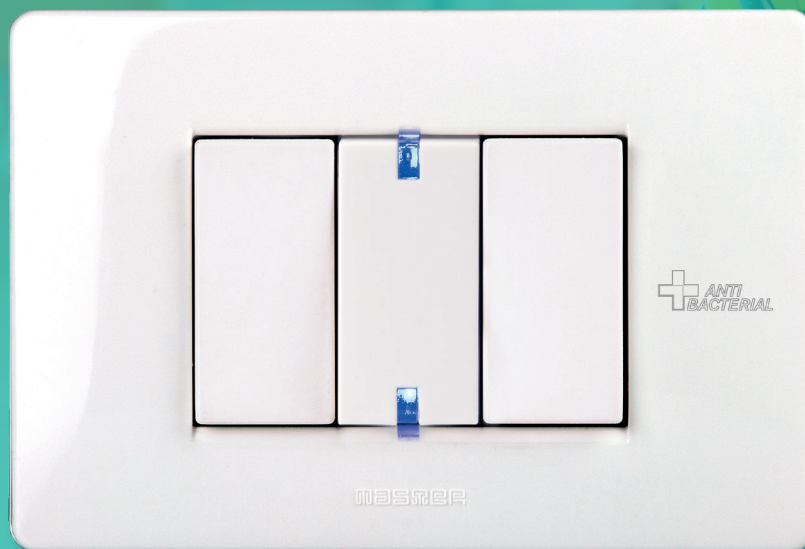


The MIX ANTI-BACTERIAL range consists of the main switches and sockets, in various international standards, as well as signal outlets and numerous accessories.

The plates are available in the PURE WHITE finish in the versions with 2, 3, 4 and 7 modules, and PURE RED with 3 and 4 modules for the sockets of the dedicated lines.

For particular projects, it is possible to customize the plates with the logo of the installation structure.

Turn on a light, open a door or turn off a tap. They are natural and instinctive gestures, which make us touch objects manipulated by many people. Using the **MIX ANTI-BACTERIAL** modular system in a healthcare or childcare facility means increasing hygiene and reducing the potential for contamination of switches and sockets. An antibacterial product can **decrease the transfer of microbes between people**, and contribute to their well-being.



MIX ANTI-BACTERIAL's BioCote® Antimicrobial technology has been shown to be effective against many microbes including: *Staphylococcus aureus*, *E. coli*, *Salmonella*, *Listeria*, *Legionella*, *Campylobacter*, *Pseudomonas*, *Shigella*, *Aspergillus Niger*, H1N1 influenza virus and feline coronavirus, strain Munich. The number of **bacteria** on a protected product is **reduced by up to 80% in 15 minutes** and **up to 99.5% in just 2 hours**. The presence of **microbes** on a protected product is reduced by **up to 99.99%.** *

* Studies carried out by BioCote ® and tests on MIX AntiBacterial products

The BioCote® **silver ion** protective technology of MIX ANTI-BACTERIAL is...

- **PERMANENT** because it does not reduce over time;
- **EFFECTIVE** against a large proportion of bacteria, microbes and even some viruses;
- **INERT** because it does not alter the safety of the electrical system;
- **EASY** because it does not change the products installation.



MIX ANTI-BACTERIAL plates and devices

Plates

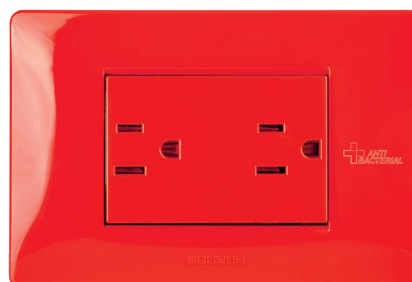
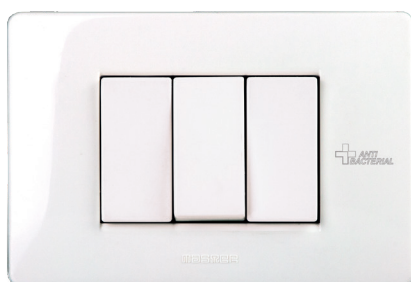
21MP102-AB	2 modules technopolymer plate, Pure White (anti-bacterial)	
21MX102-2-AB	2+2 modules technopolymer plate, Pure White (anti-bacterial)	
21MX102-3-AB	2+2+2 modules technopolymer plate, Pure White (anti-bacterial)	
21MX102-4-AB	2+2+2+2 modules technopolymer plate, Pure White (anti-bacterial)	
21MX103-AB	3 modules technopolymer plate, Pure White (anti-bacterial)	
21MX104-AB	4 modules technopolymer plate, Pure White (anti-bacterial)	
21MX107-AB	7 modules technopolymer plate, Pure White (anti-bacterial)	
21MX153-AB	3 modules technopolymer plate, Pure Red (anti-bacterial)	
21MX154-AB	4 modules technopolymer plate, Pure Red (anti-bacterial)	

The antibacterial characteristics refer only to the **plastic contact surfaces of the devices**, after installation on flush-mounted boxes, completed by the appropriate anti-bacterial plate.

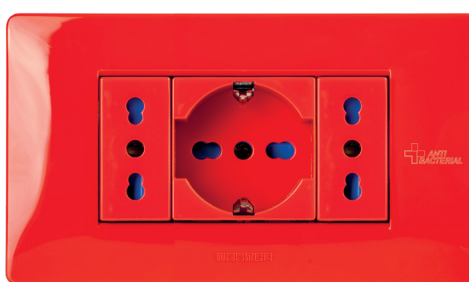
2



3



4



7



1 module switches



21000-AB ☼

1P switch 16AX 250V~, with interchangeable key cover



21002-AB ☼

2P switch 16AX 250V~, with interchangeable key cover



21003-AB ☼

1P two-way switch 16AX 250V~, with interchangeable key cover



21004-AB ☼

Reversing switch 16AX 250V~, with interchangeable key cover



21005-AB ☼

1P NO push-button 16A 250V~, with interchangeable key cover



21060-AB ☼

Multifunction device 16AX 250V~ (1P/2P switch, NO/NC push-button), with interchangeable key cover



21020-AB

Double push-button 1P NO +1P NO 16A 250V~



21028-AB

1P 10A two-circuit switch (3 terminals) 250V~



21029-AB

2P 10A two-circuit switch (6 terminals) 250V~



21030-AB ☼

1P NO cord-operated push-button 16A 250V~ with 2.25m cord



21604-AB ☼

Interchangeable key cover for push-button with key symbol



21606-AB ☼

Interchangeable key cover for push-button with light symbol



21608-AB ☼

Interchangeable key cover for push-button with bell symbol



21615-AB ☼

Interchangeable key cover for push-button with fan symbol

2 modules switches



21000.2-AB ☼

2 modules 1P switch 16AX 250V~, with interchangeable key cover



21002.2-AB ☼

2 modules 2P switch 16AX 250V~, with interchangeable key cover



21003.2-AB ☼

2 modules 1P two-way switch 16AX 250V~, with interchangeable key cover



21004.2-AB ☼

2 modules reversing switch 16AX 250V~, with interchangeable key cover



21005.2-AB ☼

2 modules 1P NO push-button 16A 250V~, with interchangeable key cover

Products marked with the ☼ symbol are designed for backlighting.

2 modules switches



21625-AB ✨

2 modules interchangeable key cover for push-button with key symbol



21627-AB ✨

2 modules interchangeable key cover for push-button with light symbol



21629-AB ✨

2 modules interchangeable key cover for push-button with bell symbol

Electronic switches



21050-AB ✨

Electronic volumetric infrared presence detector for alarm systems with relay output with 1A isolated changeover contact (NO-C-NC), 12V DC



21051-AB ✨

Infrared presence detector with timer and twilight, power supply 240V~. 5A C-NA contact $\cos\phi = 1$ in 230V ~ for resistive or inductive load

✨ In presence detectors, only the plastic front panel is made with ANTI-BACTERIAL technology, while the lenses and gems do not have this peculiarity.

UNA Automation devices



HA10013-AB

Electronic push-button, single or double use, 5/24V 10mA with led



HA10023-AB

Electronic push-button with arrows, single or double use, 5/24V 10mA with led



HA10033-AB

Electronic push-button "all shutters", single or double use, 5/24V 10mA with led



HA10043-AB

Electronic push-button for temperature adjustment, single or double use, 5/24V 10mA with led



HA10053-AB

Electronic push-button with ON/OFF symbol, single or double use, 5/24V 10mA with led



HA10413-AB

1 module thermostat with RS485 bus connection and 12V power supply



HA10713-AB

1 module hygrometer with RS485 bus connection and 12V power supply



HA10533-AB

1 module brightness sensor to be connected to Fluxa boards



HA10633-AB

1 module NTC probe to be connected to Therna boards



HA02213-AB

Difra2: NFC stand-alone/ bus access management module, 12V power supply, 2 modules

Sockets



21159-AB

Italian P17/11 socket, 2P+E 16A 250V~, with safety shield



21186-AB

2P+E 15A 127V~ American socket, unshielded holes



21186-L-AB

2P+E 15A 250V~ American socket, unshielded holes



21188-AB

2P+E 16A 250V~ Euro-american socket, unshielded holes



21170-AB

Italian "P40" 2P+E 16A 250V~ socket, 2 modules, with safety shield



21176-AB

German standard 2P+E 16A 250V~ Schuko socket, with safety shield



21177-AB

French standard 2P+E 16A 250V~ socket, with safety shield



21178-AB

British standard 2P+E 13A 250V~ socket, with safety shield



21187-AB

British standard 2P+E 15A 250V~ socket, with safety shield



21188.2-AB

Euro-american 2P+E 16A 250V~ socket, 2 modules, with safety shield

3 modules sockets



21186.2-AB

Double 2P+E 15A 127V~ American socket, 3 modules, unshielded holes



21188.3-AB

Double Euro-american 2P+E 16A 250V~ socket, 3 modules, with safety shield



21184.3-AB

Double American 2P+E 16A 250V~ socket with GFCI, support included. To be completed with 3 modules cover plate.

Power supplies



21190-AB

Shaver socket with separation transformer 2P 127V~ and 230V~, 20 VA, 3 modules



21213.2-AB

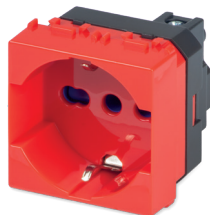
USB power supply, 2 modules, 100-240V~, 4A, 2 USB type-A outlets.

Socket outlets for dedicated lines



21159R-AB

Italian P17/11 socket, 2P+E 16A 250V~, with safety shield, red



21170R-AB

Italian "P40" 2P+E 16A 250V~ socket, 2 modules, with safety shield, red



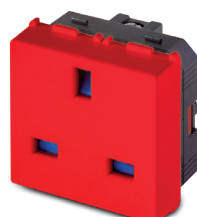
21176R-AB

German standard 2P+E 16A 250V~ Schuko socket, with safety shield, red



21177R-AB

French standard 2P+E 16A 250V~ socket, with safety shield, red



21178R-AB

British standard 2P+E 13A 250V~ socket, with safety shield, red



21186.2R-AB

Double 2P+E 15A 127V~ American socket, 3 modules, unshielded holes, red

RJ11/RJ45 and TV socket outlets



21216-AB

RJ12 telephone outlet, 6/6 contacts +



21218-AB

RJ45 Cat.5 UTP outlet without shielding +



21220-AB

RJ45 Cat.6 UTP outlet without shielding +



21221-AB

RJ45 Cat.6 FTP outlet with shielding +



21265-AB ⚡

Coaxial IEC TV outlet, Ø 9.5 mm male +



21266-AB ⚡

Coaxial SAT outlet, 75 ohms, 1 module +



21218-T-AB

1 module adapter for RJ Keystone connector, white



21218-TR-AB

1 module adapter for RJ Keystone connector, red



21218.2-T-AB

2 modules adapter for RJ Keystone connector, white

+ In the telephone, data and TV outlets only the plastic front panel is made with ANTI-BACTERIAL technology, while the plastic or metal connectors do not have this peculiarity.

Acoustic signalling



21350-AB

12V bell, 5VA 80dB



21351-AB

230V~ bell, 8VA 80dB



21352-AB

127V~ bell, 8VA 80dB



21354-AB

127V~ buzzer, 8VA 70dB



21355-AB

12V buzzer, 5VA 70dB



21356-AB

230V~ buzzer, 8VA 70dB

Accessories



21090-AB

Pack of 3 blank modules



MIX ANTIBACTERIAL products are individually packaged in flow-packs with code, barcode and characteristics marking.

Compatible accessories (without antibacterial features)



38020-I

2 modules MODO, MIX, MIX-AB support, easy attach, rear insertion of devices, with clips, for round box



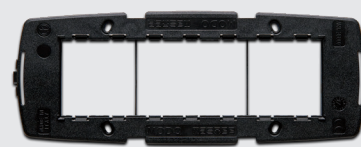
38003

3 modules MODO, MIX, MIX-AB support, rear insertion of devices, with screw.



38004

4 modules MODO, MIX, MIX-AB support, rear insertion of devices, with screw.



38007

7 modules MODO, MIX, MIX-AB support, rear insertion of devices, with screw.



38003-F

3 modules MODO, MIX, MIX-AB support, front insertion of devices, with screw.



38004-F

4 modules MODO, MIX, MIX-AB support, front insertion of devices, with screw.



38007-F

7 modules MODO, MIX, MIX-AB support, front insertion of devices, with screw.



6085-L

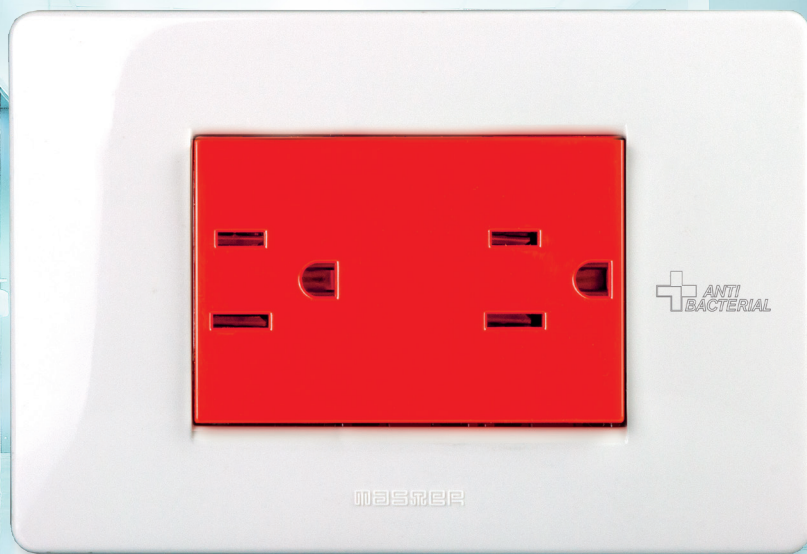
230V~ LED minilamp with 100mm cable, blue colour



6085-LB

230V~ LED minilamp with 100mm cable, white colour

The images in this catalogue are purely indicative. Master S.r.l. Divisione Elettrica reserves the right to make any changes to the products it deems necessary in order to improve their quality, at any time and without prior notice.



MIX+ ANTI BACTERIAL

MASTER
LIVING TECHNOLOGY

Master srl Divisione Elettrica
Via Mario Tognato, 16 - 35042 Este (Padova) ITALIA
Tel. +39 0429 602777 - Fax +39 0429 601247
master@master.it
www.master.it - www.domologica.com